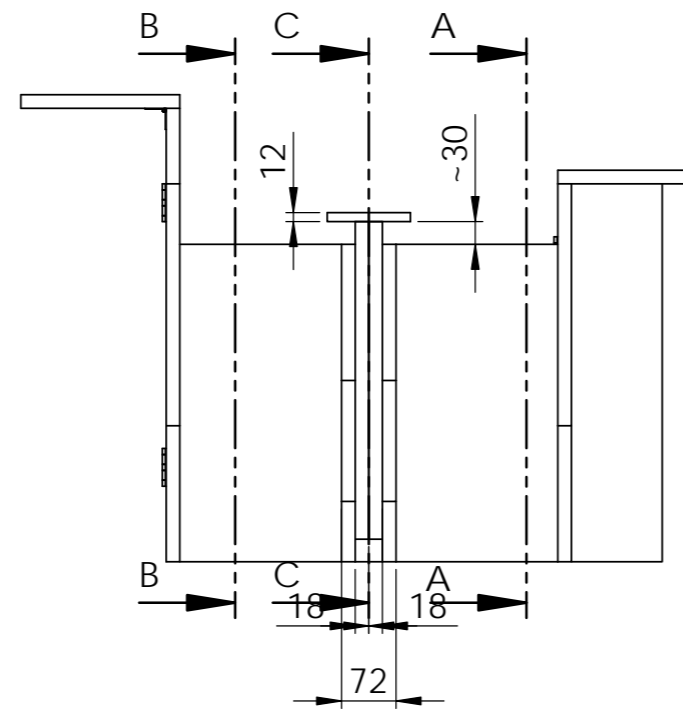
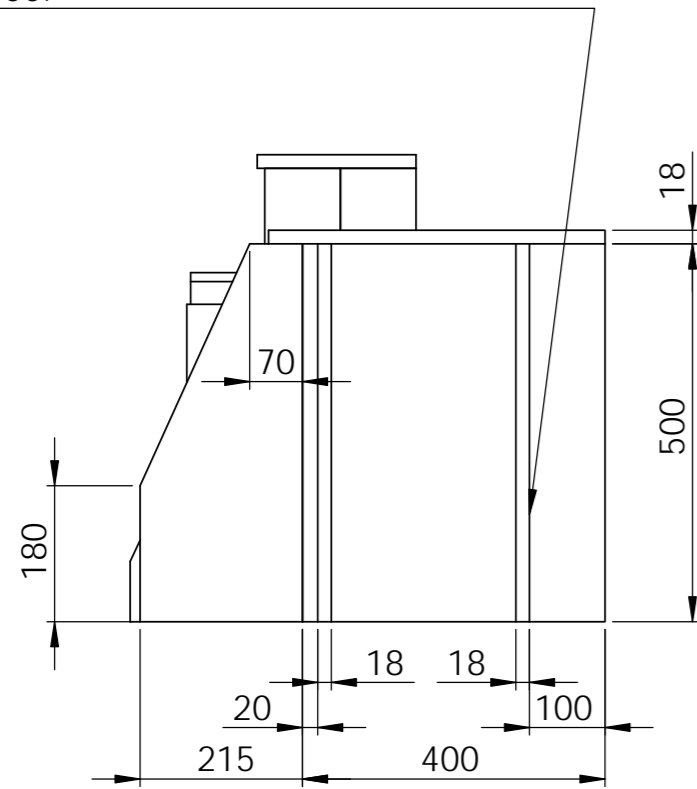
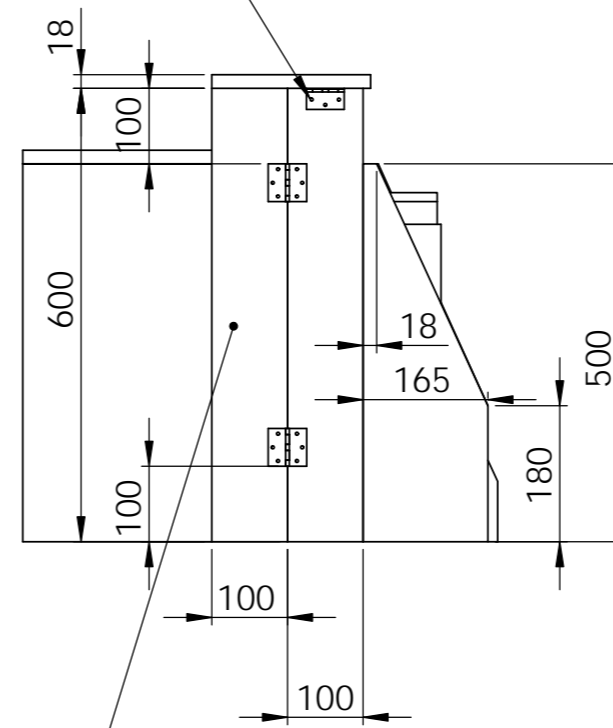


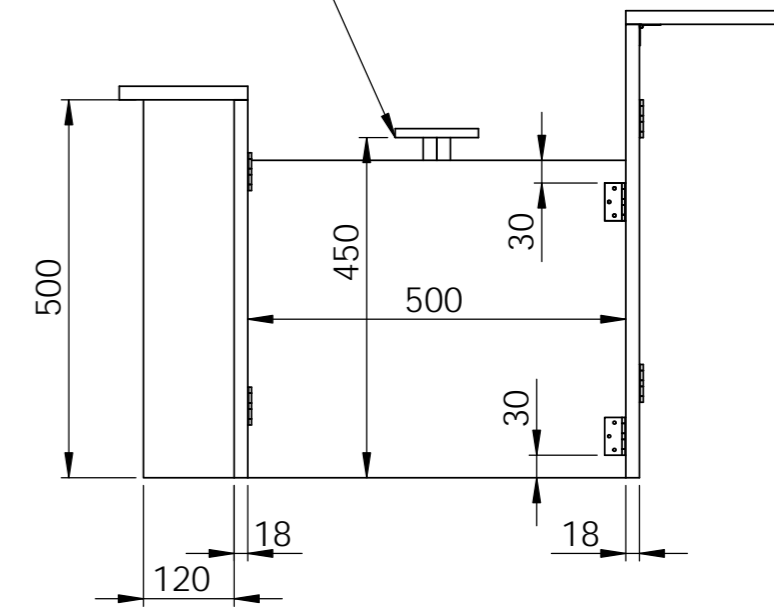
On my build this one is 70mm from the back, I wish I placed it 100 so that I could try to mounq Saitek's throttle quadrant at the rear. Thus mimicking P-51 cockpit 3 levers. Here it is 100.



I used 2 narrower ones, but one wide will suffice.

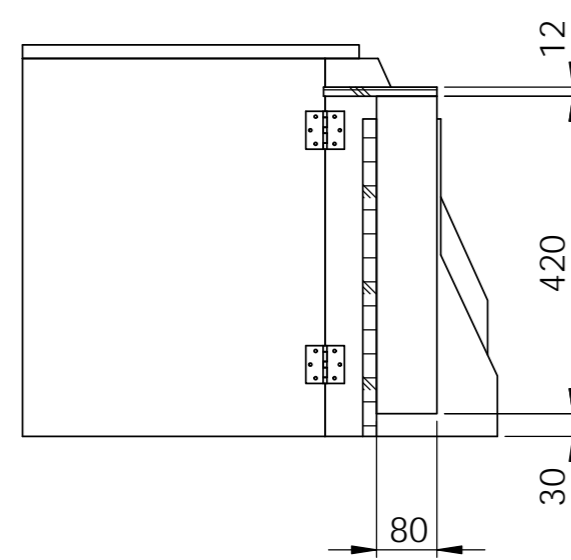


Lowest chair high I found locally

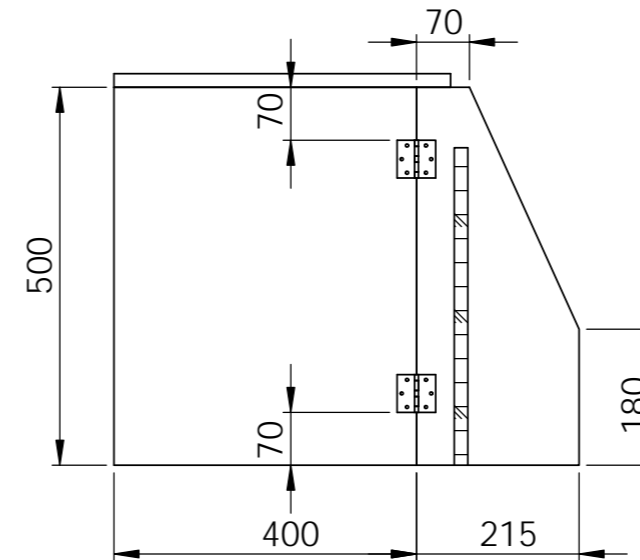


This piece is used to hold the mouse square pad.

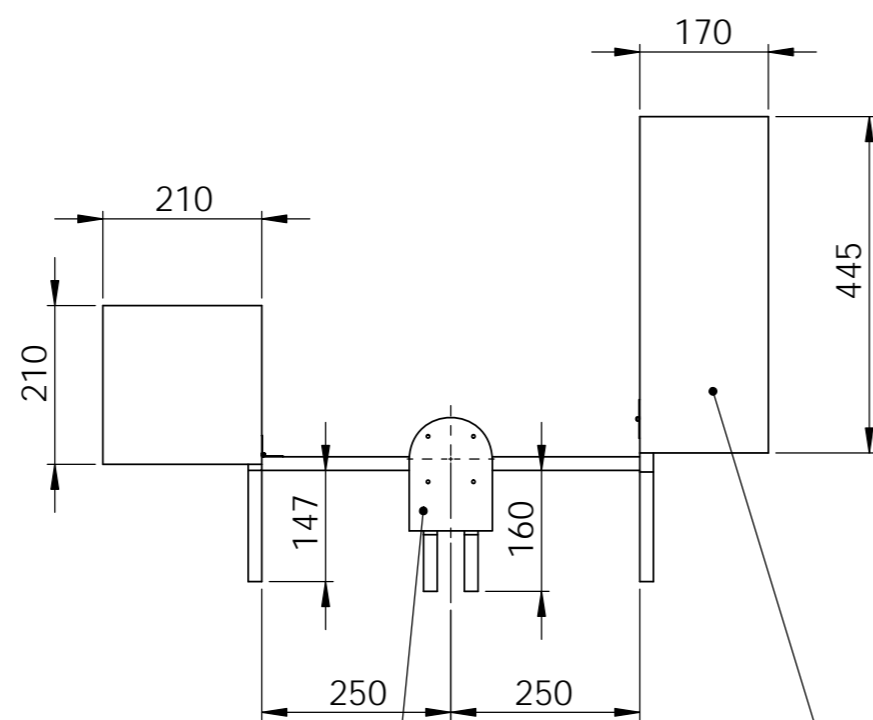
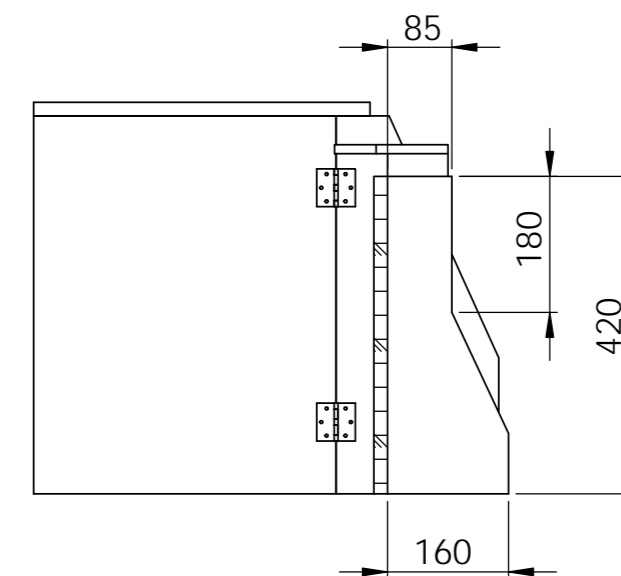
SECTION C-C



SECTION A-A



SECTION B-B



Brand new Hog mount, the reason this is 12mm is because it will not be made out of wood. Couldn't find a local CNC store that would do such small round shape for me so I am doing it from other materials.

Throttle holes I drilled only after finding the idal position. Based on the real A-10 ergonomics, I would recommend placing it all the way forward.

UNLESS OTHERWISE SPECIFIED: DIMENSIONS ARE IN MILLIMETERS SURFACE FINISH: TOLERANCES: LINEAR: ANGULAR:				FINISH:	DEBUR AND BREAK SHARP EDGES	DO NOT SCALE DRAWING	REVISION
DRAWN:						TITLE:	
CHK'D:						DWG NO: Verzija 3 #OPEN	
APP'VD:						SCALE: 1:10	
MFG:						SHEET 1 OF 1	
Q.A:						A2	
MATERIAL:							
WEIGHT:							